

PARAMAX® 9000 Series	Selection
Dimensional Comparison Table (PX8 vs PX9)	9P2-004E
	1 / 9

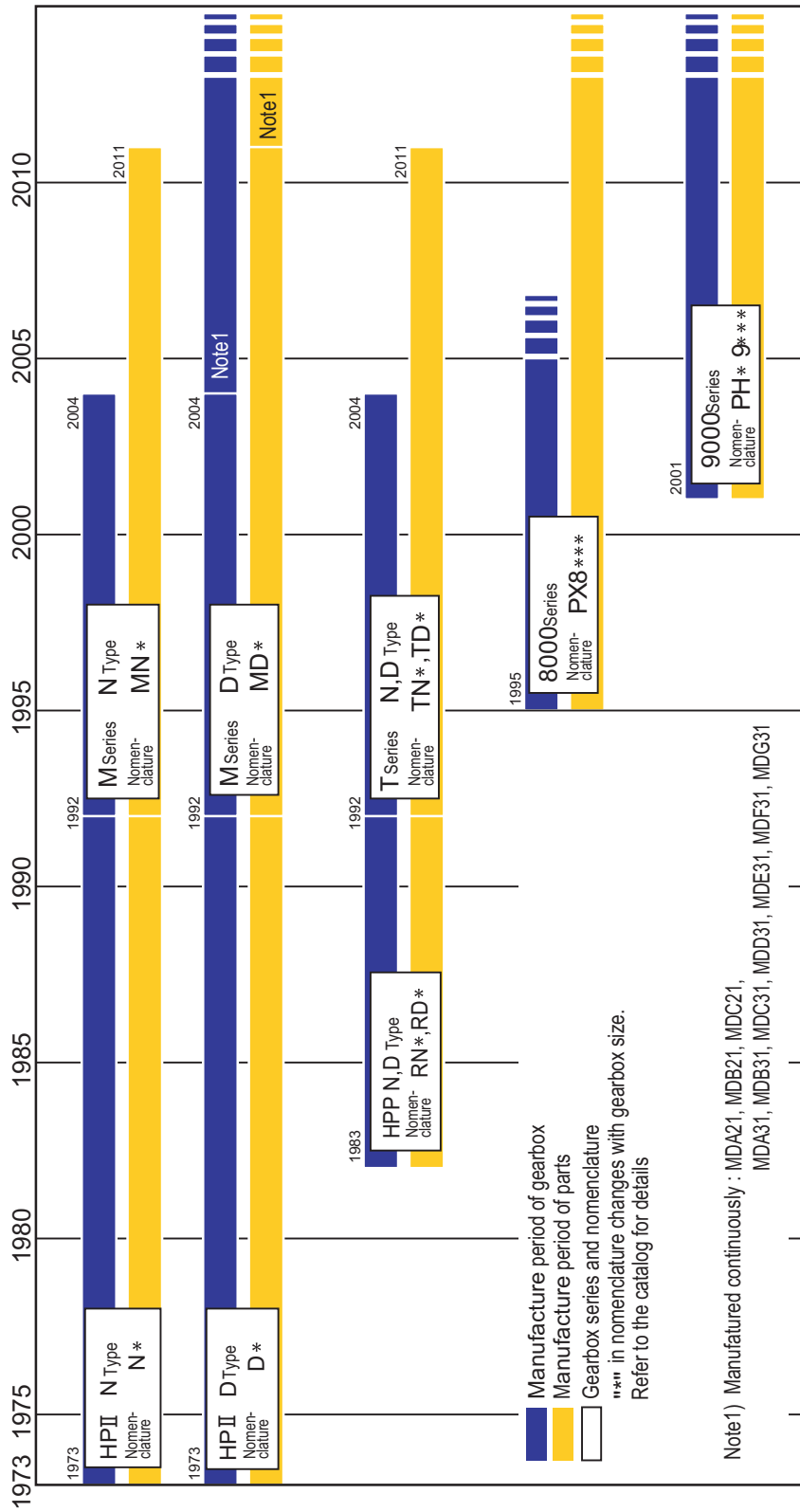
This sales manual shows comparison data of previous series and Paramax 9000 series.
Utilize this manual when the previous gearbox is replaced by Paramax 9000 series.

CONTENTS

- 1. Changes and the manufacturing period of PARAMAX gearbox 2 / 9
- 2. Output torque comparison graph 3 / 9
- 3. Dimensional comparison table (PX8 vs PX9) 4 / 9 ~ 9 / 9

Dimensions of M series and T series are completely different from the dimensions of Paramax9000. When replacing M series or T series, check dimensions from the catalog.

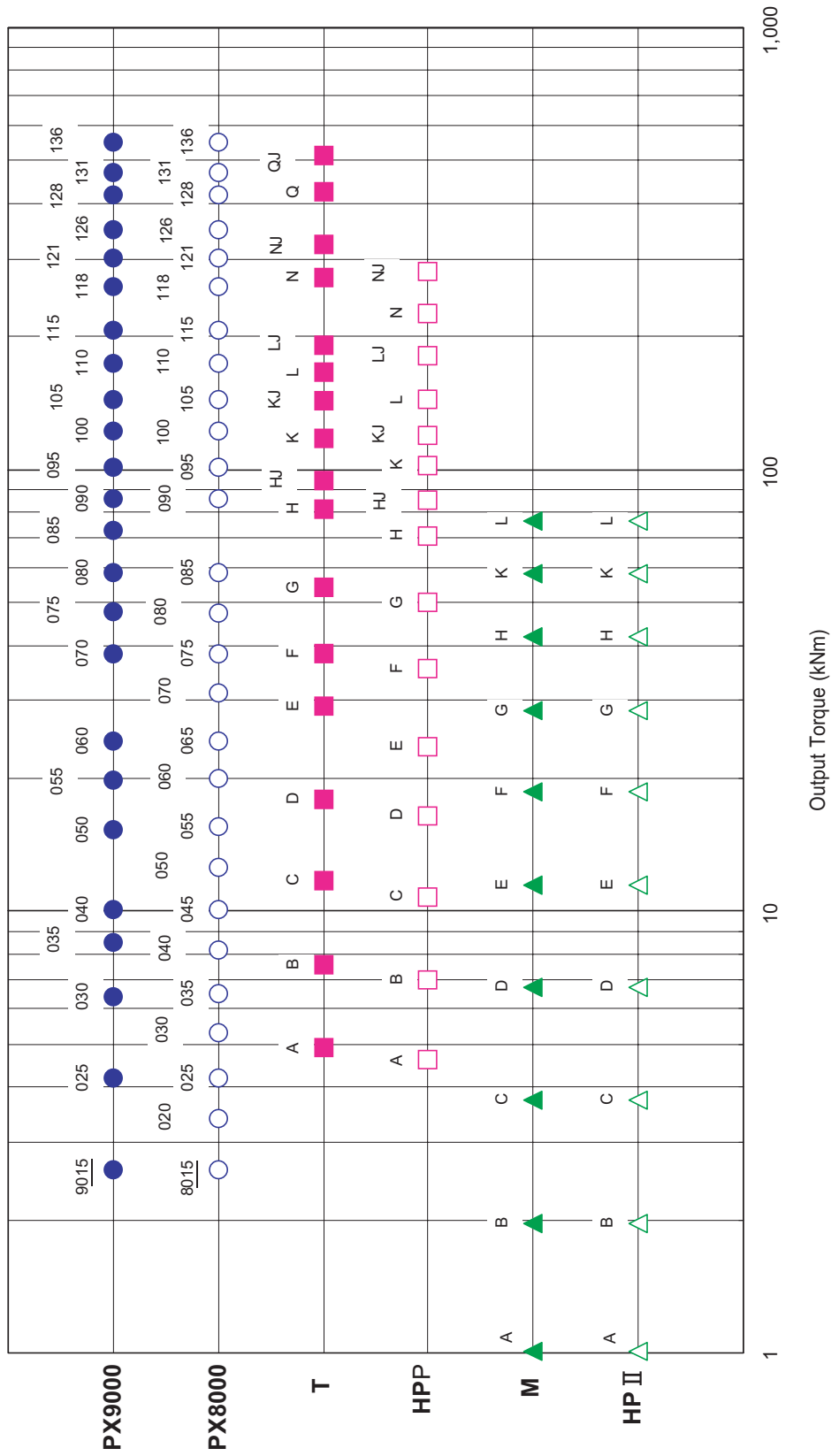
1. Changes and the manufacturing period of PARAMAX gearbox



Dimensional Comparison Table (PX8 vs PX9)

2. Output Torque Comparison

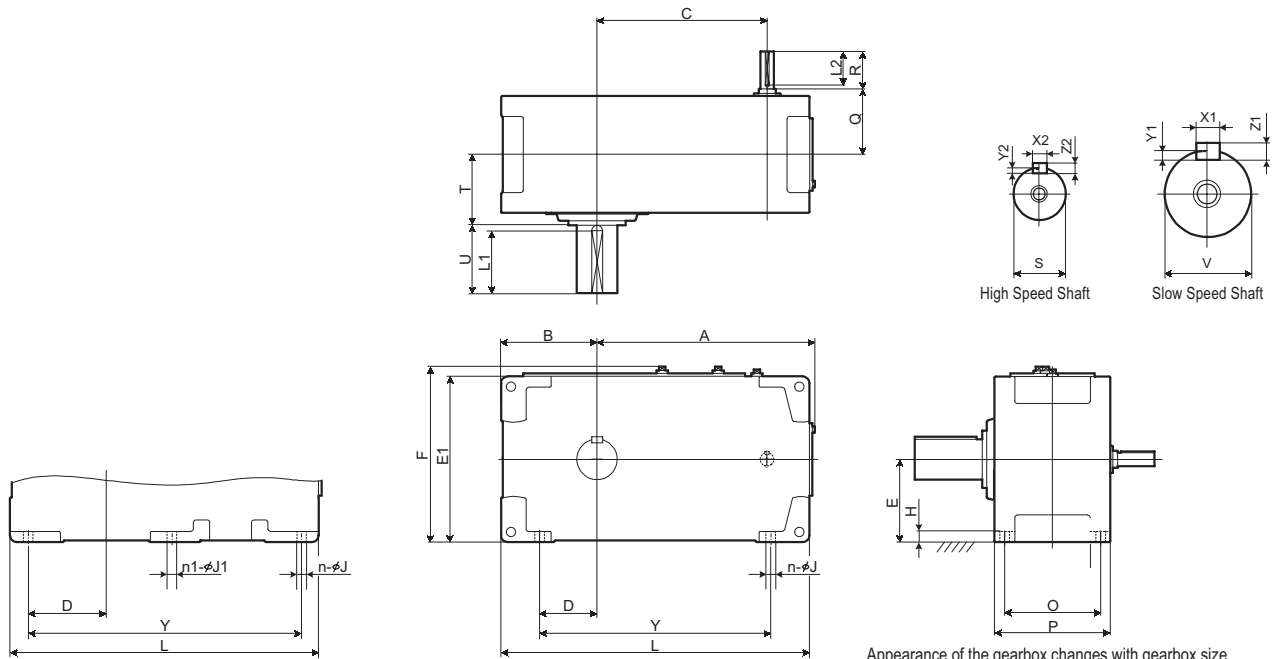
Output torque is an approximate value.
The number and the alphabet in the graph below show the size of the gearbox.



Dimensional Comparison Table (PX8 vs PX9)

3. PX9000 & PX8000 Dimensional Comparison Table

(1) Parallel Shaft Double Reduction



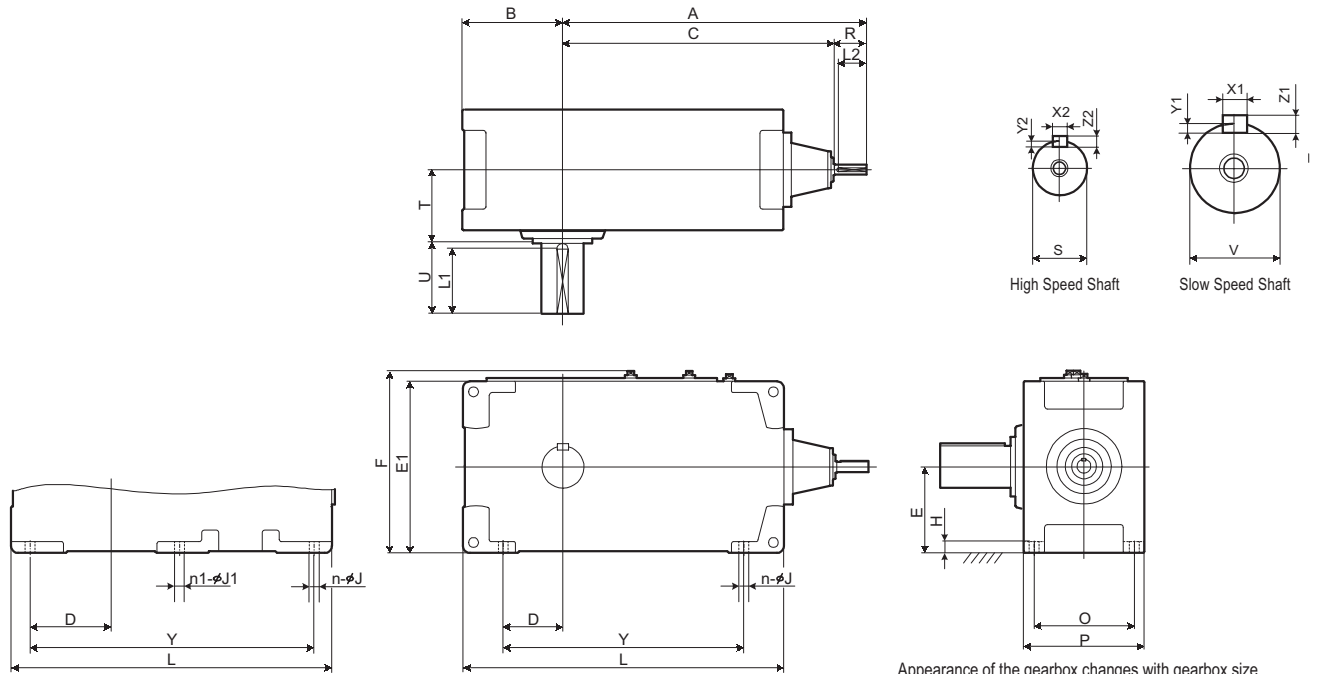
Appearance of the gearbox changes with gear size, numbers of stages, etc. Refer to the catalog for details.

(Units : mm)

Size	A	B	C	D	E	E1	F	H	n	J	n1	J1	L	O	P	Y	Slow Speed Shaft				High Speed Shaft									
																	V	U	T	Key				S	R	Q	Key			
																				X1	Y1	Z1	L1				X2	Y2	Z2	L2
8015	340	165	194	140	140	280	327		22	4	15	-	510	150	185	460	58m6	110	135	18	7	11	95	30k6	80	131	8	4	7	70
9015	295	160		90	135	270	299						440	170	205	300	70m6	140	145	20	7.5	12	125	35k6	80	146	10	5	8	70
8025	419	185	227	150	160	320	367	25	4	19	-	-	585	170	210	520														
9025	346	175		95	155	310	339						505	195	235	345														
8035	439	205	264	165	180	360	407						615	190	235	550	78m6	140												
9030	406	200		110	160	320	349	28	4	24	-	-	590	215	265	410	80m6	170	160	22	9	14	120	40k6	110	159	12	5	8	95
9035	437	219	295	129	185	370	399						640			460	90m6			25	9	14	150							
8045	511	230	306	185	200	400	447	30	4	28	-	-	700	215	270	620														
9040	467	235		120	200	400	431						685	255	315	455	95m6	170	179	25	9	14	150	50k6	110	174	14	5.5	9	95
8055	588	270	358	225	225	450	497				2	24	820	255	310	740														
9050	537	255		138.5	210	420	451	32	4	28	-	-	775	285	345	542	110m6	210	201	28	10	16	190	55m6	110	193	16	6	10	95
9055	576	286	397	171	245	490	521						845			615	120m6			32	11	18	185							
8065	669	305	414	250	265	530	578	35	4	35	-	-	935	280	350	840														
9060	621	291		151									885	310	380	615	125m6	210	230	32	11	18	185	28	140	220	18	7	11	125
8075	782	340	482	275	300	600	648	40			2	28	1075	320	400	960														
9070	719	328		163				4	4	42	-	-	1020	350	430	700	145m6	250	259	36	12	20	225	75m6	140	245	20	7.5	12	125
9075	772	375	535	210	335	670	718	52					1120			800	160m6	300	262	40	13	22	275							
8085	926	380	556	315	335	670	718	45			2	35	1260	360	440	1140														
9080	812	370		205				4	4	42	-	-	1155	380	460	835	165m6	300	282	40	13	22	275	85m6	170	264	22	9	14	150
9085	868	414	612	249	375	750	798	52					1255			935	175m6		285	45	15	25	270							
8090																														
9090	1070	428	640	345	375	750	797	50	4	42	2	42	1440	480	570	1320	180m6	300	350	45	15	25	270	90m6	170	330	25	9	14	150
8095																														
9095	1100	440	670	375	400	800	847	50	4	42	2	42	1500	480	570	1380	190m6	350	350	45	15	25	320	90m6	170	330	25	9	14	150
8100																														
9100	1204	450	724	375	425	850	897	55	4	48	2	48	1610	560	650	1470	200m6	350	390	45	15	25	320	100m6	210	375	28	10	16	190
8105																														
9105	1238	485	758	410	450	900	947	55	4	48	2	48	1680	560	650	1540	220m6	350	390	50	17	28	320	100m6	210	375	28	10	16	190
8110																														
9110	1354	500	824	420	475	950	997	60	4	56	2	56	1810	610	710	1660	220m6	350	420	50	17	28	320	110m6	210	405	28	10	16	190
8115																														
9115	1403	550	873	470	500	1000	1047	60	4	56	2	56	1910	610	710	1760	240m6	410	420	56	20	32	375	110m6	210	405	28	10	16	190

Dimensional Comparison Table (PX8 vs PX9)

(4) Right Angle Shaft Double Reduction



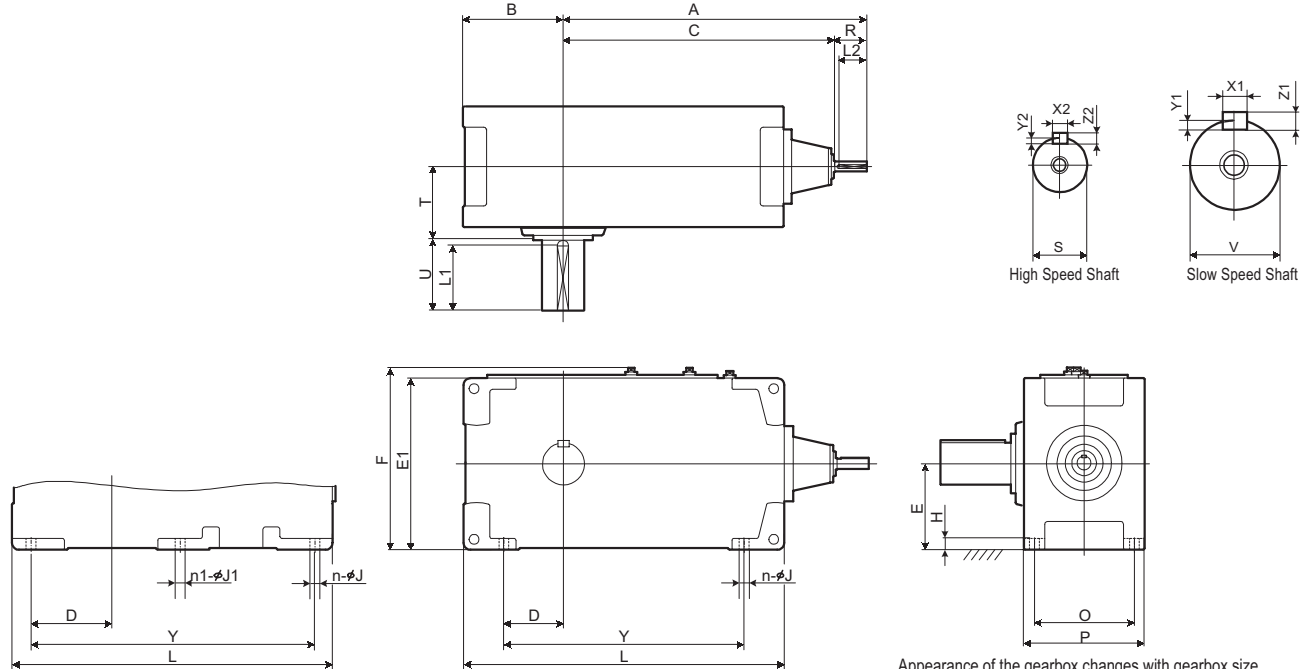
Appearance of the gearbox changes with gearbox size, numbers of stages, etc. Refer to the catalog for details.

(Units : mm)

Size	A	B	C	D	E	E1	F	H	n	J	n1	J1	L	O	P	Y	Slow Speed Shaft					High Speed Shaft								
																	V	U	T	Key				S	R	Key				
																				X1	Y1	Z1	L1			X2	Y2	Z2	L2	
8015	487	165	427	140	140	280	327	22	4	15	-	-	510	150	185	350	58m6	110	135	18	7	11	95	28k6	60	8	4	7	50	
9015	507	160	427	90	135	270	299						440	170	205	300									80				70	
8025	545	185	465	150	160	320	367	25	4	19	-	-	585	170	210	385	70m6	140	145	20	7.5	12	125	35k6	80	10	5	8	70	
9025		175		95	155	310	339						505	195	235	345														
8035	645	205	535	165	180	360	407	28	4	24	-	-	615	190	235	440	78m6	140	160	22	9	14	120	40k6	110	14	5.5	9	95	
9030		200		110	160	320	349						590	215	265	410														80m6
9035	676	219	566	129	185	370	399						640			460	90m6													
8045	705	230	595	185	200	400	447	30	4	28	-	-	700	215	270	495	95m6	170	179	25	9	14	150	45k6	110	14	5.5	9	95	
9040		235		120	200	400	431						685	255	315	455														
8055	755	270	645	225	225	450	497	32	4	28	-	-	820	255	310	605	110m6	210	201	28	10	16	190	50k6	110	14	5.5	9	95	
9050		255		138.5	210	420	451						775	285	345	542														
9055	794	286	684	171	245	490	521						845			615	120m6													
8065	865	305	725	250	265	530	578	35	4	35	-	-	935	280	350	670	125m6	210	230	32	11	18	185	60m6	140	18	7	11	125	
9060		291		151																										
8075	965	340	825	275	300	600	648	40	4	42	-	-	1075	320	400	760	145m6	250	259	36	12	20	225	65m6	140	18	7	11	125	
9070		328		163																										
9075	1018	375	878	210	335	670	718	52					1120	350	430	800	160m6	300	262	40	13	22	275							
8085	1080	380	940	315	335	670	718	45	4	42	-	-	1260	360	440	890	165m6	300	282	40	13	22	275	75m6	140	20	7.5	12	125	
9080		370		205																										
9085	1136	414	996	249	375	750	798	52	4	42	-	-	1255	380	460	935	175m6		285	45	15	25	270							
8095	1393	460	1223	190	450	-	895	27/39	4	42	2	42	1090	520	610	920	190m6	350	350	45	15	25	320	90m6	170	25	9	14	150	
9095																														
8105	1589	500	1379	210	500	-	995	27/39	4	42	2	42	1220	570	660	1040	220m6	350	390	50	17	28	320	100m6	210	28	10	16	190	
9105																														
8115	1802	560	1592	240	560	-	1120	34/46	4	48	2	48	1390	630	730	1190	240m6	410	420	56	20	32	375	110m6	210	28	10	16	190	
9115																														

Dimensional Comparison Table (PX8 vs PX9)

(5) Right Angle Shaft Triple Reduction

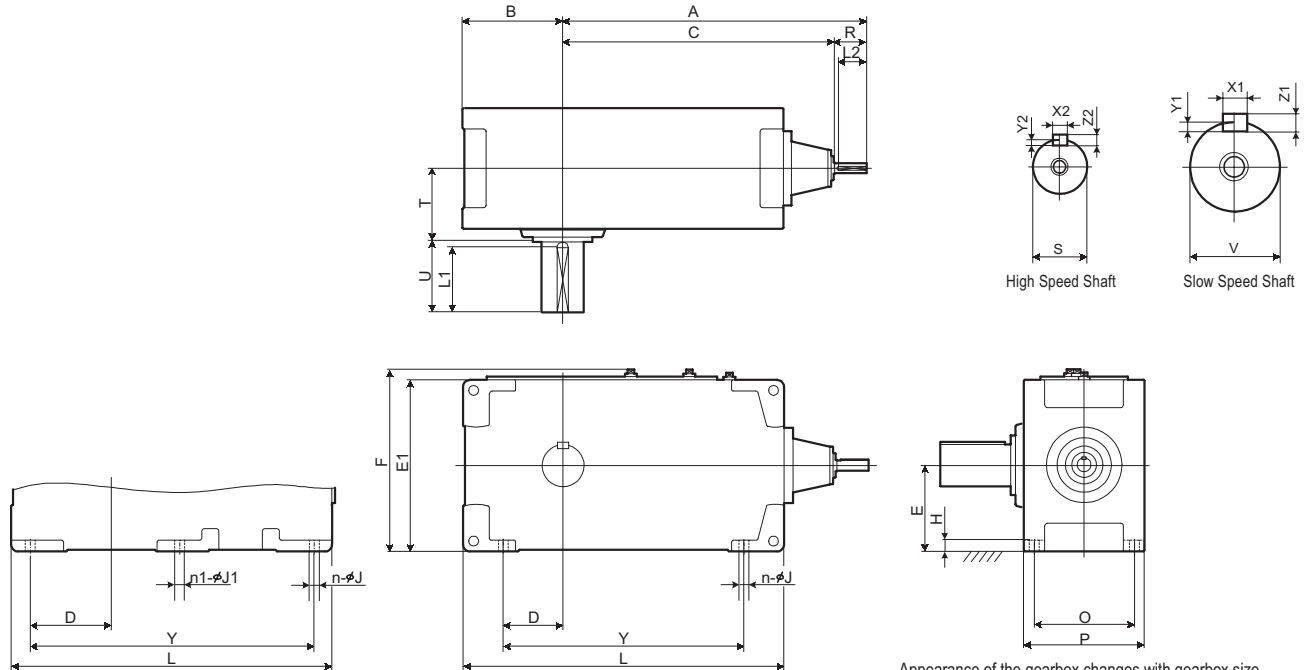


(Units : mm)

Size	A	B	C	D	E	E1	F	H	n	J	n1	J1	L	O	P	Y	Slow Speed Shaft				High Speed Shaft									
																	V	U	T	Key				S	R	Key				
																				X1	Y1	Z1	L1			X2	Y2	Z2	L2	
8035	-	636	205	576	165	180	360	407	28	4	24	-	615	190	235	550	78m6	140	160	22	9	14	120	28k6	60	8	4	7	50	
9030	-	656	200	576	110	160	320	349	28	4	24	-	590	215	265	410	80m6	170	160	25	9	14	150	80	8	4	7	70		
9035	-	687	219	607	129	185	370	399	28	4	24	-	640	255	315	460	90m6	170	160	25	9	14	150	80	8	4	7	70		
8045	-	716	230	636	185	200	400	447	30	4	28	-	700	215	270	620	95m6	170	179	25	9	14	150	30k6	80	8	4	7	70	
9040	-	716	235	636	120	200	400	431	30	4	28	-	685	255	315	455	95m6	170	179	25	9	14	150	30k6	80	8	4	7	70	
8055	-	808	270	728	225	225	450	497	32	4	28	2	24	820	255	310	740	110m6	210	201	28	10	16	190	35k6	80	10	5	8	70
9050	-	808	255	728	138.5	210	420	451	32	4	28	-	775	285	345	542	110m6	210	201	32	11	18	185	35k6	80	10	5	8	70	
9055	-	847	286	767	171	245	490	521	32	4	28	-	845	285	345	615	120m6	210	201	32	11	18	185	35k6	80	10	5	8	70	
8065	-	939	305	829	250	265	530	578	35	4	35	2	24	935	280	350	840	125m6	210	230	32	11	18	185	45k6	110	14	5.5	9	95
9060	-	939	291	829	151	265	530	578	35	4	35	-	885	310	380	615	125m6	210	230	32	11	18	185	45k6	110	14	5.5	9	95	
8075	-	1027	340	917	275	300	600	648	40	4	42	2	28	1075	320	400	960	145m6	250	259	36	12	20	225	50k6	110	14	5.5	9	95
9070	-	1027	328	917	163	300	600	648	40	4	42	-	1020	350	430	700	145m6	250	259	36	12	20	225	50k6	110	14	5.5	9	95	
9075	-	1080	375	970	210	335	670	718	52	4	42	-	1120	350	430	800	160m6	300	262	40	13	22	275	50k6	110	14	5.5	9	95	
8085	-	1176	380	1036	315	335	670	718	45	4	42	2	35	1260	360	440	1140	165m6	300	282	40	13	22	275	60m6	140	18	7	11	125
9080	-	1176	370	1036	205	335	670	718	45	4	42	-	1155	380	460	835	165m6	300	282	40	13	22	275	60m6	140	18	7	11	125	
9085	-	1232	414	1092	249	375	750	798	52	4	42	-	1255	380	460	935	175m6	300	282	40	13	22	275	60m6	140	18	7	11	125	
8090	-	1320	428	1180	345	375	750	797	50	4	42	2	42	1440	480	570	1320	180m6	300	350	45	15	25	270	65m6	140	18	7	11	125
9090	-	1320	428	1180	345	375	750	797	50	4	42	2	42	1440	480	570	1320	180m6	300	350	45	15	25	270	65m6	140	18	7	11	125
8095	-	1350	440	1210	375	400	800	847	50	4	42	2	42	1500	480	570	1380	190m6	350	350	45	15	25	320	65m6	140	18	7	11	125
9095	-	1350	440	1210	375	400	800	847	50	4	42	2	42	1500	480	570	1380	190m6	350	350	45	15	25	320	65m6	140	18	7	11	125
8100	-	1474	450	1334	375	425	850	897	55	4	48	2	48	1610	560	650	1470	200m6	350	390	45	15	25	320	75m6	140	20	7.5	12	125
9100	-	1474	450	1334	375	425	850	897	55	4	48	2	48	1610	560	650	1470	200m6	350	390	45	15	25	320	75m6	140	20	7.5	12	125
8105	-	1508	485	1368	410	450	900	947	55	4	48	2	48	1680	560	650	1540	220m6	350	390	50	17	28	320	75m6	140	20	7.5	12	125
9105	-	1508	485	1368	410	450	900	947	55	4	48	2	48	1680	560	650	1540	220m6	350	390	50	17	28	320	75m6	140	20	7.5	12	125
8110	-	1684	500	1514	420	475	950	997	60	4	56	2	56	1810	610	710	1660	220m6	350	420	50	17	28	320	85m6	170	22	9	14	150
9110	-	1684	500	1514	420	475	950	997	60	4	56	2	56	1810	610	710	1660	220m6	350	420	50	17	28	320	85m6	170	22	9	14	150
8115	-	1733	550	1563	470	500	1000	1047	60	4	56	2	56	1910	610	710	1760	240m6	410	420	56	20	32	375	85m6	170	22	9	14	150
9115	-	1733	550	1563	470	500	1000	1047	60	4	56	2	56	1910	610	710	1760	240m6	410	420	56	20	32	375	85m6	170	22	9	14	150
8118	-	1774	608	1604	490	535	1070	1117	65	4	56	2	56	1990	610	710	1800	260m6	410	440	56	20	32	375	85m6	170	22	9	14	150
9118	-	1774	608	1604	490	535	1070	1117	65	4	56	2	56	1990	610	710	1800	260m6	410	440	56	20	32	375	85m6	170	22	9	14	150
8121	31.5	2053	663	1843	545	580	1160	1207	70	4	56	2	56	2180	680	780	1990	280m6	470	465	63	20	32	425	110m6	210	28	10	16	190
9121	31.5	2053																							90m6	170	25	9	14	150
8126	31.5	2053	663	1843	545	580	1160	1207	70	4	56	2	56	2180	680	780	1990	280m6	470	465	70	22	36	425	110m6	210	28	10	16	190
9126	31.5	2053																							90m6	170	25	9	14	150
8128	-	2244	680	2034	330	600	1194	1241	55	4	66	2	66	1990	710	840	1710	320m6	470	480	70	22	36	524	100m6	210	28	10	16	190
9128	-	2244	680	2034	330	600	1194	1241	55	4	66	2	66	1990	710	840	1710	320m6	470	480	70	22	36	524	100m6	210	28	10	16	190
8131	-	2479	730	2269	330	630	1256	1303	60	4	66	2	66	2170	850	980	1890	340m6	550	550	80	25	40	500	110m6	210	28	10	16	190
9131	-	2479	730	2269	330	630	1256	1303	60	4	66	2	66	2170	850	980	1890	340m6	550	550	80	25	40	500	110m6	210	28	10	16	190
8136	-	2479	730	2269	330	630	1256	1303	60	4	66	2	66	2170	850	980	1890	360m6	550	560	80	25	40	500	110m6	210	28	10	16	190
9136	-	2479	730	2269	330	630	1256	1303	60	4	66	2	66	2170	850	980	1890	360m6	550	560	80	25	40	500	110m6	210	28	10	16	190

Dimensional Comparison Table (PX8 vs PX9)

(6) Right Angle Shaft Quadruple Reduction



Appearance of the gearbox changes with gearbox size, numbers of stages, etc. Refer to the catalog for details.

(Units : mm)

Size	A	B	C	D	E	E1	F	H	n	J	n1	J1	L	O	P	Y	Slow Speed Shaft						High Speed Shaft						
																	V	U	T	Key				S	R	Key			
																				X1	Y1	Z1	L1			X2	Y2	Z2	L2
8045	770	230	710	185	200	400	447	30	4	28	-	-	700	215	270	620	95m6	170	179	25	9	14	150	28k6	60	8	4	7	50
9040	235	690	120	431	450	497	32	4	28	-	-	759	255	315	529	70													
8055	839	270	779	225	225	450	497	32	4	28	2	24	820	255	310	740	110m6	210	201	28	10	16	190	28k6	60	8	4	7	50
9050	859	255	138.5	210	420	451	848						285	345	615	918									688				688
9055	898	286	818	171	245	490	521	35	4	35	2	24	935	280	350	840	120m6	210	230	32	11	18	185	30k6	80	8	4	7	70
8065	950	305	870	250	265	530	578						935	280	350	840									970				310
9060	291	151	275	300	600	648	40	4	42	2	28	1075	320	400	960	145m6	250	259	36	12	20	225	35k6	80	10	5	8	70	
8075	1080	340	1000	163	335	670	718					52	1115	350	430									795				895	160m6
9070	328	275	1053	210	335	670	718	52	4	42	2	35	1215	380	460	955	165m6	300	282	40	13	22	275	45k6	110	14	5.5	9	95
9075	1133	375	1053	210	335	670	718	52					1275	380	460	1055									175m6				285
8085	1250	380	1140	315	335	670	718	45	52	4	42	-	1260	360	440	1140	180m6	300	350	45	15	25	270	50k6	110	14	5.5	9	95
9080	370	205	375	750	798	1275	380	460					1055	175m6	285	45									15				25
9085	1306	414	1196	249	375	750	798	52	50	4	42	2	1440	480	570	1320	190m6	350	350	45	15	25	320	50k6	110	14	5.5	9	95
8090	1382	428	1272	345	375	750	797	50					1500	480	570	1380									190m6				350
9090	440	1302	375	400	800	847	50	4	42	2	42	1500	480	570	1380	190m6	350	350	45	15	25	320	50k6	110	14	5.5	9	95	
8095	1412	440	1302	375	400	800	847	50	4	42	2	42	1500	480	570	1380	190m6	350	350	45	15	25	320	50k6	110	14	5.5	9	95
9095	1570	450	1430	375	425	850	897	55	4	48	2	48	1610	560	650	1470	200m6	350	390	45	15	25	320	60m6	140	18	7	11	125
8100	1604	485	1464	410	450	900	947	55	4	48	2	48	1680	560	650	1540	220m6	350	390	50	17	28	320	60m6	140	18	7	11	125
9100	1670	500	1530	420	475	950	997	60	4	56	2	56	1810	610	710	1660	220m6	350	420	50	17	28	320	60m6	140	18	7	11	125
8115	1719	550	1579	470	500	1000	1047	60	4	56	2	56	1910	610	710	1760	240m6	410	420	56	20	32	375	60m6	140	18	7	11	125
9110	1760	608	1620	490	535	1070	1117	65	4	56	2	56	1990	610	710	1800	260m6	410	440	56	20	32	375	60m6	140	18	7	11	125
8118	1760	608	1620	490	535	1070	1117	65	4	56	2	56	1990	610	710	1800	260m6	410	440	56	20	32	375	60m6	140	18	7	11	125
9115	1970	663	1830	545	580	1160	1207	70	4	56	2	56	2180	680	780	1990	280m6	470	465	63	20	32	425	65m6	140	18	7	11	125
8121	1970	663	1830	545	580	1160	1207	70	4	56	2	56	2180	680	780	1990	280m6	470	465	63	20	32	425	65m6	140	18	7	11	125
9121	1970	663	1830	545	580	1160	1207	70	4	56	2	56	2180	680	780	1990	300m6	470	465	70	22	36	425	65m6	140	18	7	11	125
8126	2163	680	2023	330	600	1194	1241	55	4	66	2	66	1990	710	840	1710	320m6	470	480	70	22	36	524	75m6	140	20	7.5	12	125
9126	2410	730	2240	330	630	1256	1303	60	4	66	2	66	2170	850	980	1890	340m6	550	550	80	25	40	500	85m6	170	22	9	14	150
8128	2410	730	2240	330	630	1256	1303	60	4	66	2	66	2170	850	980	1890	340m6	550	550	80	25	40	500	85m6	170	22	9	14	150
9128	2410	730	2240	330	630	1256	1303	60	4	66	2	66	2170	850	980	1890	360m6	550	560	80	25	40	500	85m6	170	22	9	14	150